



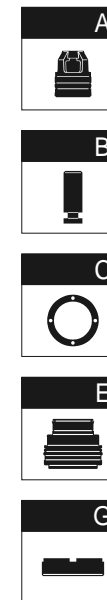
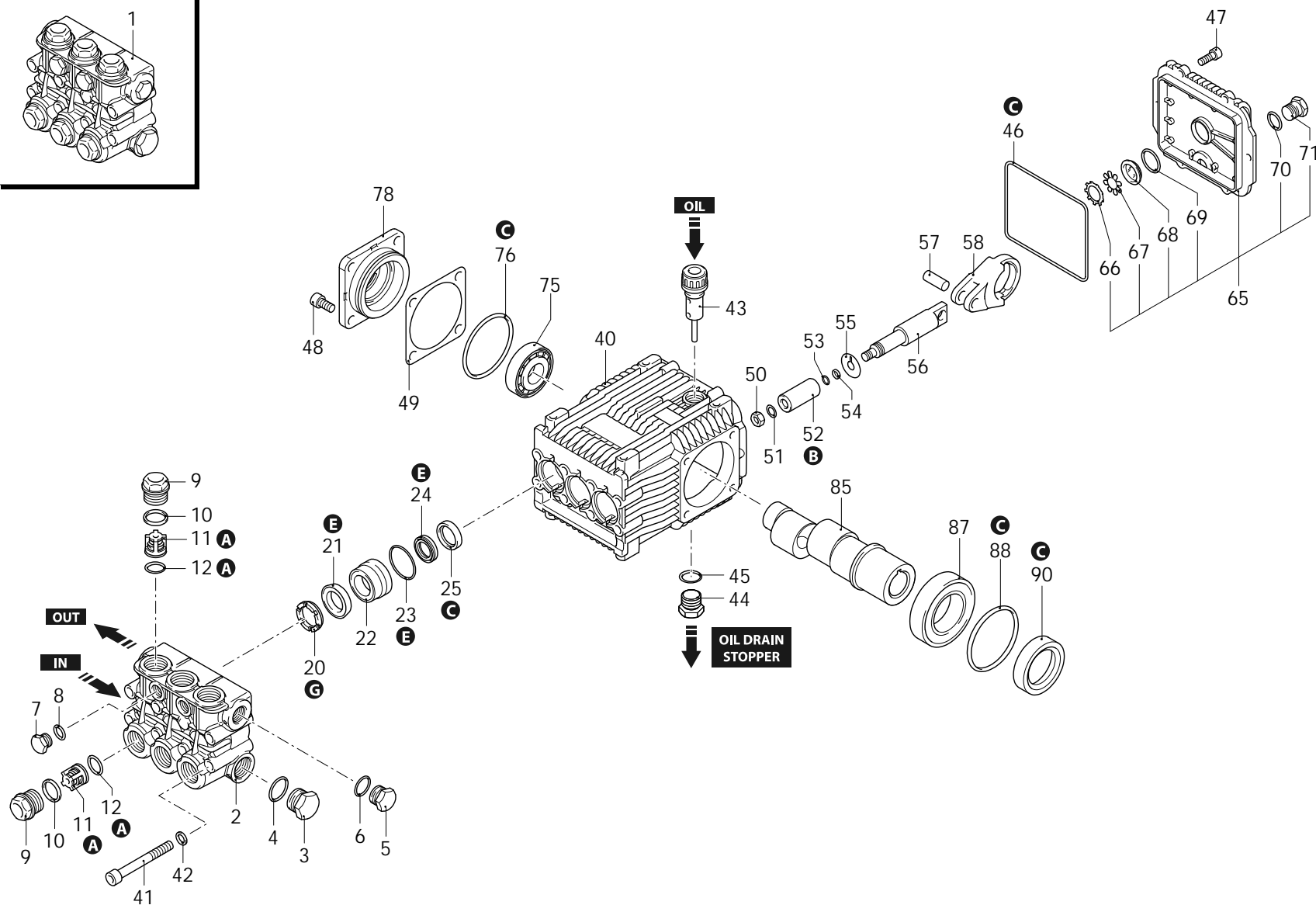
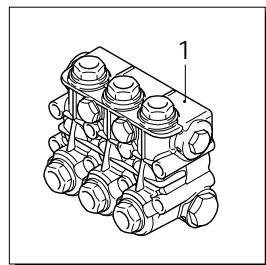
Series 228

RKV

D

3400rpm

ø 1"



AR_s228-04_v01

29/09/2023



Series 228

RKV

D

3400rpm

Ø 1"

P	Code	Description	Q	Note	Validity	P	Code	Description	Q	Note	Validity
1	2289221	Head assembly	Ø 18	1		58	1383020	Connecting-rod	bronze	3	
2	2281590	Head	nickel plated	1		65	1789010	Cover	complete	1	
3	960870	Plug	1/2" G nickel	1	Screw with Loxeal 55-14 / C=30Nm	66	1260430	Ring		1	
4	180101	O-ring	Ø 17,5x2	1	Lubricate with grease Molykote PG54	67	1780690	Plate		1	
5	1981180	Plug	3/8" G nickel	1	Screw with Loxeal 55-14 / C=20Nm	68	1260250	Level gauge		1	
6	740290	O-ring	Ø 14x1,78	1	Lubricate with grease Molykote PG54	69	1140450	O-ring	Ø 20,24x2,62	1	Lubricate with grease Molykote PG54
7	1380690	Plug	1/4" G nickel	1	Screw with Loxeal 55-14 / C=15Nm	70	740290	O-ring	Ø 14x1,78	1	Lubricate with grease Molykote PG54
8	820510	O-ring	Ø 10,82x1,78	1		71	1980740	Plug	3/8" G brass	1	C=20Nm
9	960850	Plug		6		75	2280340	Bearing		1	
10	960160	O-ring	Ø 17,86x2,62	6	Lubricate with grease Molykote PG54	76	640030	O-ring	Ø 59,99x2,62	1	
11	889052	Complete valve		6		78	1380050	Support	open bearing	1	
12	880830	O-ring	Ø 15,54x2,62	6		85	2280130	Shaft	8 marked	1	
20	960110	Ring	support Ø 18	3		87	1383150	Bearing		1	
21	1382740	Water seal	Ø 18	3	Lubricate with grease Molykote PG54	88	1380220	O-ring	Ø 72,75x1,78	1	
22	1380090	Piston guide	Ø 18	3		90	621170	Ring	seal	1	Assemble with tool [1781000]
23	961240	O-ring	Ø 31,47x1,78	3		A	1828	Valve kit		1	
24	880330	Water seal	Ø 18	3		B	2757	Piston kit	Ø 18	1	
25	880520	Ring	seal	3		C	1856	Oil seal kit		1	
40	1382770	Pump body		1		E	1857	Water seal kit	Ø 18	1	
41	820150	Screw	TCEI M8x70	8	C=25Nm	E	2809	Water seal kit	Ø 18 Viton	1	
42	1381850	Washer		8		G	1829	Support ring kit	Ø 18	1	
43	880130	Oil plug	with oil dipstick	1							
44	1980740	Plug	3/8" G brass	1	C=20Nm						
45	740290	O-ring	Ø 14x1,78	1	Lubricate with grease Molykote PG54						
46	1780510	O-ring	Ø 106x3	1							
47	1343510	Screw	TCEI M6x14	6	C=10Nm						
48	850370	Screw	TCEI M8x16	4	C=24,5Nm						
49	1380120	Shim 0.10mm		1							
49	1380130	Shim 0.19mm		1							
49	1380530	Shim 0.25mm		1							
50	962010	Nut		3							
51	962000	Washer		3	Screw with Loxeal 55-14 / C=20Nm						
52	1380940	Piston	Ø 18	3							
53	600180	O-ring	Ø 7,66x1,78	3							
54	1080401	Ring	anti-extrusion	3							
55	1380950	Plate		3							
56	1380920	Piston	guide	3							
57	1380060	Pin		3							

Revision: 1

Oil type: SAE 15W40

Attachment:

Date: 29/09/2023

Oil quantity: 0,435 Kg

*C= Tightening torque (Tolerance +0 ÷ -10%)*** = Not present for electric pump*



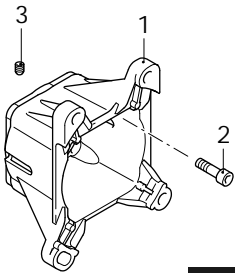
Series 228
RKV

D

3400rpm

Ø 1"

P	Code	Description		Q	Note	Validity
1	2281510	Flange	F41	1		
2	180030	Screw	TCEI M8x20	4	Screw with Loxeal 55-14 / C=24,5Nm	
3	820440	Screw	M6x6	1		



F41

AR-1_flangia-33_v01

Revision: 1

Oil type: SAE 15W40

Attachment:

Date: 29/09/2023

Oil quantity: 0,435 Kg

C= Tightening torque (Tolerance +0 ÷ -10%)